

REGIONAL SPECIALISED METEOROLOGICAL CENTRE-TROPICAL CYCLONES, NEW DELHI
TROPICAL WEATHER OUTLOOK

DEMS-RSMC SPECIAL TROPICAL CYCLONES NEW DELHI DATED 10.01.2022

TROPICAL WEATHER OUTLOOK FOR NORTH INDIAN OCEAN (THEBAY OF BENGAL OF BENGAL AND ARABIAN SEA) VALID FOR NEXT 120 HOURS ISSUED AT 0600 UTC OF 10.01.2022 BASED ON 0300 UTC OF 10.01.2022.

BAY OF BENGAL:

YESTERDAY'S CYCLONIC CIRCULATION OVER EQUATORIAL INDIAN OCEAN AND ADJOINING CENTRAL PARTS OF SOUTH BAY OF BENGAL LAY OVER SOUTHWEST BAY OF BENGAL & NEIGHBOURHOOD AT 0000 UTC OF TODAY, THE 10TH JANUARY 2022 WITH VERTICAL EXTENSION UPTO 1.5 KM ABOVE MEAN SEA LEVEL. IT PERSISTED OVER THE SAME REGION AT 0300 UTC OF TODAY.

SCATTERED TO BROKEN LOW AND MEDIUM CLOUDS WITH EMBEDDED INTENSE TO VERY INTENSE CONVECTION LAY OVER SOUTH BAY OF BENGAL (MINIMUM CLOUD TOP TEMPERATURE MINUS 80 DEG C) AND MODERATE TO INTENSE CONVECTION LAY OVER SOUTH ANDAMAN SEA.

PROBABILITY OF CYCLOGENESIS (FORMATION OF DEPRESSION) DURING NEXT 120 HRS:

24 HOURS	24-48 HOURS	48-72 HOURS	72-96 HOURS	96-120 HOURS
NIL	NIL	NIL	NIL	NIL

ARABIAN SEA:

SCATTERED LOW AND MEDIUM CLOUDS WITH EMBEDDED WEAK TO MODERATE CONVECTION LAY OVER COMORIN AREA. SCATTERED LOW AND MEDIUM CLOUDS OVER REST OF ARABIAN SEA.

PROBABILITY OF CYCLOGENESIS (FORMATION OF DEPRESSION) DURING NEXT 120 HRS:

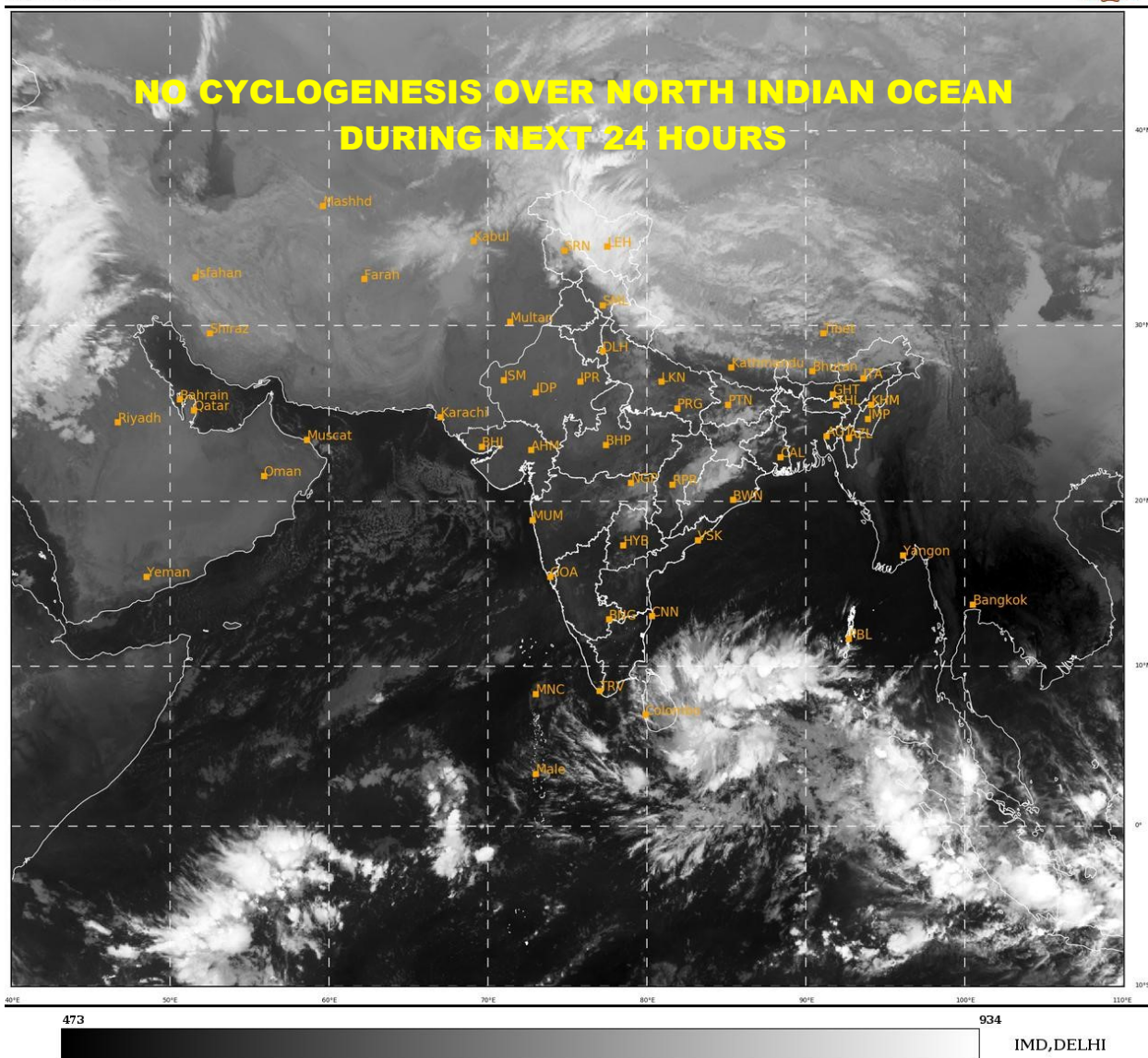
24 HOURS	24-48 HOURS	48-72 HOURS	72-96 HOURS	96-120 HOURS
NIL	NIL	NIL	NIL	NIL

REMARKS:

NIL

SAT : INSAT-3D IMG
IMG_TIR1 10.8 um
LIC Mercator

10-01-2022/(0300 to 0327) GMT
10-01-2022/(0830 to 0857) IST



PROBABILITY OF CYCLOGENESIS (FORMATION OF DEPRESSION):NIL: 0%, LOW: 1-25%, FAIR: 26-50%, MODERATE: 51-75% AND HIGH: 76-100%
This is a guidance Bulletin for the WMO/ESCAP Panel Member countries,. Please visit respective National websites for Country specific Bulletins